

Hassad Australia



Hassad Australia Operations

HA TOTAL
14 Aggregations
291,700 hectares

WA: GRAINS

Bindana Downs – 8,483 Ha
Amarinya - 14,672 Ha
Yupiri – 8,340 Ha

SA: GRAINS

Eyre Peninsula - 7,106 Ha
Mid North – 3,263 Ha

SA: LIVESTOCK

Telopea Downs – 6,460 Ha

QLD: LIVESTOCK

Clover Downs – 125,292 Ha

NSW: LIVESTOCK AND GRAINS

Urawilkie and Laura Downs – 25,934 Ha
Raby Stud – 8,560 Ha
Old Bundemar – 22,562 Ha
Gindurra – 8,516 Ha
Englefield Plains – 7,448 Ha

VIC: LIVESTOCK AND GRAINS

Telopea Downs – 34,189 Ha
Barton Station – 8,244 Ha
Kaladbro – 2,632 Ha



Grain Production

Crop	Ha	t/Ha	t
Wheat	40,379	2.99	120,861
Canola	15,187	1.41	21,422
Faba Beans	1,016	1.70	1,726
Chickpeas	4,494	1.33	5,976
Lupins	1,459	1.62	2,361
Barley	10,318	2.71	28,002
TOTAL	72,853		180,348

** HA 2015 Budget – Production - Grains*

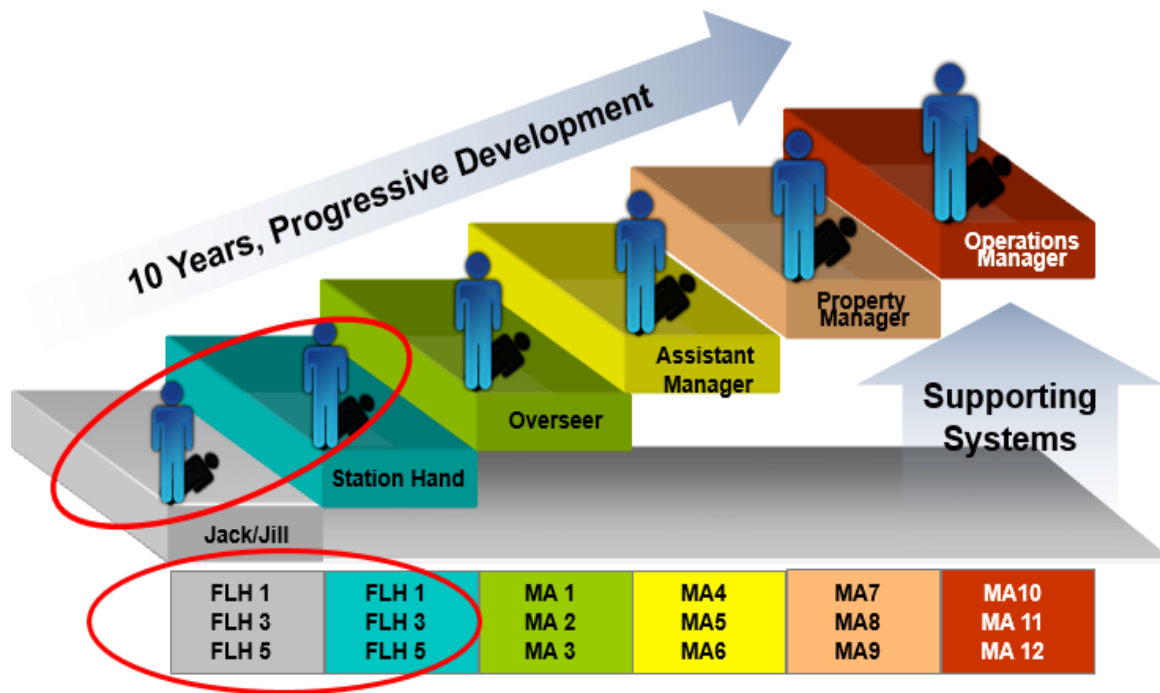
Livestock Production

Livestock	No. of Head
Ewes	194,726
Rams	6,174
Lambs	77,122
Weaners	32,900
Hoggets	93,881
Cows	2,152
Bulls	68
Calves	1,750
TOTAL	408,772



** HA 2015 Budget – Production - Livestock*

Career Progression



What types of people are we looking for?

Recruit for Attitude, Train For Skill

- Attitude:
 - Passion, Initiative, Team Work, 'Can-Do'
- Values
 - Safety, People & Communities, AH & W
- Technical
 - Machinery / GPS
 - Motor vehicle / bike licences
 - Animal Husbandry



Contact us

- Hassad Website – www.hassad.com.au
- Human Resources – (02) 9900 3719
- Email: hr.au@hassad.com

